



Nazi Germany

This vehicle is the default icon for the chassis.

This vehicle is used as a TD when *No Step Back* is turned off.

This vehicle is used as an SPG when *No Step Back* is turned off.

This vehicle is used as an SPAAG when *No Step Back* is turned off.

This vehicle is in the production list at the beginning of the game, but the icon in the list is incorrect.

This vehicle is in the production list at the beginning of the game.

This vehicle's template can be unlocked by completing the focus, but the icon of template is incorrect.

This vehicle's template can be unlocked by completing the focus.

This is an unhistorical vehicle.

Interwar Light Chassis

Light Chassis I

Light Chassis II

Light Chassis III

Amphibious Chassis

Interwar Medium Chassis

Medium Chassis I

Medium Chassis II

Medium Chassis III

Interwar Heavy Chassis

Heavy Chassis I

Heavy Chassis II

Heavy Chassis III

Super Heavy Chassis

Modern Chassis

Leichttrktor Rheinmetall M1930

Leichttrktor Rheinmetall M1933

Leichttrktor Krupp

Pz.Kpfw I Ausf.A

Pz.Kpfw I Ausf.C

Pz.Bfwg I Ausf.A

Pz.Jäger I Alkett

Bison

Pz.Kpfw I w/ Wurfrahmen 40

Pz.Kpfw 35(t)

Pz.Kpfw 35(t)

Pz.Kpfw I w/ Wurfrahmen 40

Pz.Kpfw 35(t)

Pz.Kpfw 35(t)

Pz.Kpfw 35(t)

Pz.Kpfw 35(t)

Pz.Kpfw 35(t)

Pz.Kpfw 35(t)

Pz.Kpfw 35(t)

Pz.Kpfw 35(t)

Pz.Kpfw 35(t)

Pz.Kpfw 35(t)

Pz.Kpfw 35(t)

Pz.Kpfw 35(t)

Pz.Kpfw 35(t)

Pz.Kpfw 35(t)

Pz.Kpfw 35(t)

Pz.Kpfw 35(t)

Pz.Kpfw 35(t)

Pz.Kpfw 35(t)

Pz.Kpfw 35(t)

Pz.Kpfw 35(t)

Pz.Kpfw 35(t)

Pz.Kpfw 35(t)

Pz.Kpfw 35(t)

Pz.Kpfw 35(t)

Pz.Kpfw 35(t)

Pz.Kpfw 35(t)

Pz.Kpfw 35(t)

Pz.Kpfw 35(t)

Pz.Kpfw 35(t)

Pz.Kpfw 35(t)

Pz.Kpfw 35(t)

Pz.Kpfw 35(t)

Pz.Kpfw 35(t)

Pz.Kpfw 35(t)

Pz.Kpfw 35(t)

Pz.Kpfw 35(t)

Pz.Kpfw 35(t)

Pz.Kpfw 35(t)

Pz.Kpfw 35(t)

Pz.Kpfw 35(t)

Pz.Kpfw 35(t)

Pz.Kpfw 35(t)

Pz.Kpfw 35(t)

Pz.Kpfw 35(t)

Pz.Kpfw 35(t)

Pz.Kpfw 35(t)

Pz.Kpfw 35(t)

Pz.Kpfw 35(t)

Pz.Kpfw 35(t)

Pz.Kpfw 35(t)

Pz.Kpfw 35(t)

Pz.Kpfw 35(t)

Pz.Kpfw 35(t)

Pz.Kpfw 35(t)

Pz.Kpfw 35(t)

Pz.Kpfw 35(t)

Pz.Kpfw 35(t)

Pz.Kpfw 35(t)

Pz.Kpfw 35(t)

Pz.Kpfw 35(t)

Pz.Kpfw 35(t)

Pz.Kpfw 35(t)

Pz.Kpfw 35(t)

Pz.Kpfw 35(t)

Pz.Kpfw 35(t)

Pz.Kpfw 35(t)

Pz.Kpfw 35(t)

Pz.Kpfw 35(t)

Pz.Kpfw 35(t)

Pz.Kpfw 35(t)

Pz.Kpfw 35(t)

Pz.Kpfw 35(t)

Pz.Kpfw 35(t)

Pz.Kpfw 35(t)

Pz.Kpfw 35(t)

Pz.Kpfw 35(t)

Pz.Kpfw 35(t)

Pz.Kpfw 35(t)

Pz.Kpfw 35(t)

Pz.Kpfw 35(t)

Pz.Kpfw 35(t)

Pz.Kpfw 35(t)

Pz.Kpfw 35(t)

Pz.Kpfw 35(t)

Pz.Kpfw 35(t)

Pz.Kpfw 35(t)

Pz.Kpfw 35(t)

Pz.Kpfw 35(t)

Pz.Kpfw 35(t)

Pz.Kpfw 35(t)

Pz.Kpfw 35(t)

Pz.Kpfw 35(t)

Pz.Kpfw 35(t)

Pz.Kpfw 35(t)

Pz.Kpfw 35(t)

Pz.Kpfw 35(t)

Pz.Kpfw 35(t)

Pz.Kpfw 35(t)

Pz.Kpfw 35(t)

Pz.Kpfw 35(t)

Pz.Kpfw 35(t)

Pz.Kpfw 35(t)

Pz.Kpfw 35(t)

Pz.Kpfw 35(t)

Pz.Kpfw 35(t)

Pz.Kpfw 35(t)

Pz.Kpfw 35(t)

Pz.Kpfw 35(t)

Pz.Kpfw 35(t)

Pz.Kpfw 35(t)

Pz.Kpfw 35(t)

Pz.Kpfw 35(t)

Pz.Kpfw 35(t)

Pz.Kpfw 35(t)

Pz.Kpfw 35(t)

Pz.Kpfw 35(t)

Pz.Kpfw 35(t)

Pz.Kpfw 35(t)

Pz.Kpfw 35(t)

Pz.Kpfw 35(t)

Pz.Kpfw 35(t)

Pz.Kpfw 35(t)

Pz.Kpfw 35(t)

Pz.Kpfw 35(t)

Pz.Kpfw 35(t)

Pz.Kpfw 35(t)

Pz.Kpfw 35(t)

Pz.Kpfw 35(t)

Pz.Kpfw 35(t)

Pz.Kpfw 35(t)

Pz.Kpfw 35(t)

Pz.Kpfw 35(t)

Pz.Kpfw 35(t)

Pz.Kpfw 35(t)

Pz.Kpfw 35(t)

Pz.Kpfw 35(t)

Pz.Kpfw 35(t)

Pz.Kpfw 35(t)

Pz.Kpfw 35(t)

Pz.Kpfw 35(t)

Pz.Kpfw 35(t)

Pz.Kpfw 35(t)

Pz.Kpfw 35(t)

Pz.Kpfw 35(t)

Pz.Kpfw 35(t)

Pz.Kpfw 35(t)

Pz.Kpfw 35(t)

Pz.Kpfw 35(t)

Pz.Kpfw 35(t)

Pz.Kpfw 35(t)

Pz.Kpfw 35(t)

Pz.Kpfw 35(t)

Pz.Kpfw 35(t)

Pz.Kpfw 35(t)

Pz.Kpfw 35(t)

Pz.Kpfw 35(t)

Pz.Kpfw 35(t)

Pz.Kpfw 35(t)

Pz.Kpfw 35(t)

Pz.Kpfw 35(t)

Pz.Kpfw 35(t)

Pz.Kpfw 35(t)

Pz.Kpfw 35(t)

Pz.Kpfw 35(t)

Pz.Kpfw 35(t)

Pz.Kpfw 35(t)

Pz.Kpfw 35(t)

Pz.Kpfw 35(t)

Pz.Kpfw 35(t)

Pz.Kpfw 35(t)

Pz.Kpfw 35(t)

Pz.Kpfw 35(t)

Pz.Kpfw 35(t)

Pz.Kpfw 35(t)

Pz.Kpfw 35(t)

Pz.Kpfw 35(t)

Pz.Kpfw 35(t)

Pz.Kpfw 35(t)

Pz.Kpfw 35(t)

Pz.Kpfw 35(t)

Pz.Kpfw 35(t)

Pz.Kpfw 35(t)

Pz.Kpfw 35(t)

Pz.Kpfw 35(t)

Pz.Kpfw 35(t)

Pz.Kpfw 35(t)

Pz.Kpfw 35(t)

Pz.Kpfw 35(t)

Pz.Kpfw 35(t)

Pz.Kpfw 35(t)

Pz.Kpfw 35(t)

Pz.Kpfw 35(t)

Pz.Kpfw 35(t)

Pz.Kpfw 35(t)

Pz.Kpfw 35(t)

Pz.Kpfw 35(t)

Pz.Kpfw 35(t)

Pz.Kpfw 35(t)

Pz.Kpfw 35(t)

Pz.Kpfw 35(t)

Pz.Kpfw 35(t)

Pz.Kpfw 35(t)

Pz.Kpfw 35(t)

Pz.Kpfw 35(t)

Pz.Kpfw 35(t)

Pz.Kpfw 35(t)

Pz.Kpfw 35(t)

Pz.Kpfw 35(t)

Pz.Kpfw 35(t)

Pz.Kpfw 35(t)

Pz.Kpfw 35(t)

Pz.Kpfw 35(t)

Pz.Kpfw 35(t)

Pz.Kpfw 35(t)

Pz.Kpfw 35(t)

Pz.Kpfw 35(t)

Pz.Kpfw 35(t)

Pz.Kpfw 35(t)

Pz.Kpfw 35(t)

Pz.Kpfw 35(t)

Pz.Kpfw 35(t)

Pz.Kpfw 35(t)

Pz.Kpfw 35(t)

Pz.Kpfw 35(t)

Pz.Kpfw 35(t)

Pz.Kpfw 35(t)

Pz.Kpfw 35(t)

Pz.Kpfw 35(t)

Pz.Kpfw 35(t)

Pz.Kpfw 35(t)

Pz.Kpfw 35(t)

Pz.Kpfw 35(t)

Pz.Kpfw 35(t)

Pz.Kpfw 35(t)

Pz.Kpfw 35(t)

Pz.Kpfw 35(t)

Pz.Kpfw 35(t)

Pz.Kpfw 35(t)

Pz.Kpfw 35(t)

Pz.Kpfw 35(t)

Pz.Kpfw 35(t)

Pz.Kpfw 35(t)

Pz.Kpfw 35(t)

Pz.Kpfw 35(t)

Pz.Kpfw 35(t)

Pz.Kpfw 35(t)

Pz.Kpfw 35(t)

Pz.Kpfw 35(t)

Pz.Kpfw 35(t)



U.S.S.R.

This vehicle is the default icon for the chassis.

This vehicle is used as a TD when *No Step Back* is turned off.

This vehicle is used as an SPG when *No Step Back* is turned off.

This vehicle is used as an SPAAG when *No Step Back* is turned off.

This vehicle is in the production list at the beginning of the game, but the icon in the list is incorrect.

This vehicle is in the production list at the beginning of the game.

This vehicle's template can be unlocked by completing the focus, but the icon of template is incorrect.

This vehicle's template can be unlocked by completing the focus.

This is an unhistorical vehicle.

Interwar Light Chassis



Light Chassis I



Light Chassis II



Light Chassis III



Amphibious Chassis



Interwar Medium Chassis



Medium Chassis I



Medium Chassis II



Medium Chassis III



Interwar Heavy Chassis



Heavy Chassis I



Heavy Chassis II



Heavy Chassis III



Super Heavy Chassis



Modern Chassis





France

🚗 This vehicle is the default icon for the chassis.

🚗 This vehicle is used as a TD when *No Step Back* is turned off.

🚗 This vehicle is used as an SPG when *No Step Back* is turned off.

🚗 This vehicle is used as an SPAAG when *No Step Back* is turned off.

🚗 This vehicle is in the production list at the beginning of the game, but the icon in the list is incorrect.

🚗 This vehicle is in the production list at the beginning of the game.

🚗 This vehicle's template can be unlocked by completing the focus, but the icon of template is incorrect.

🚗 This vehicle's template can be unlocked by completing the focus.

🚗 This is an unhistorical vehicle.

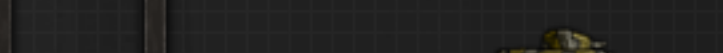
Interwar Light Chassis



FT-17



FT-31



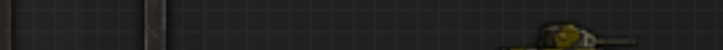
FT Char Canon



FT 75 BS



FT AC



STA 75 Chenilles



Renault UE



UE 57



NC27



NC28

Light Chassis I



H35



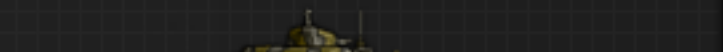
H35 modifié 38



H35 modifié 38 Command Version



H39 w/ SA-18



H39 w/ SA-38



R35



R35 modifié 39



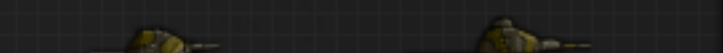
CDC 76.2mm R35



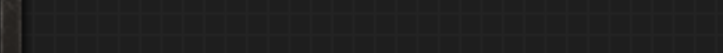
R40



AMC 34 Early

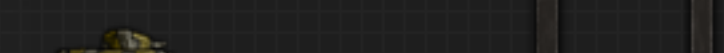


AMC 34

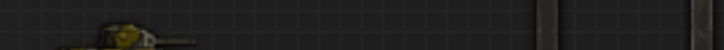


AMR 33

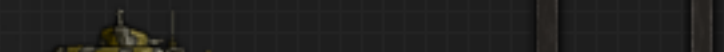
Light Chassis II



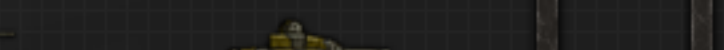
AMR 35 ZT-1 7.5mm MG



AMR 35 ZT-1 13.2mm MG



AMR 35 ZT-1 w/ Radio



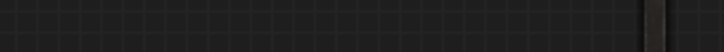
AMR 35 ZT-2



AMR 35 ZT-3



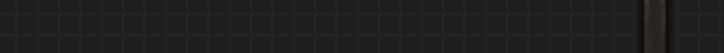
ADF 1



FCM 36

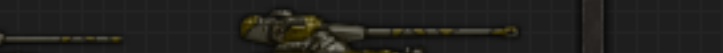


AMX 38

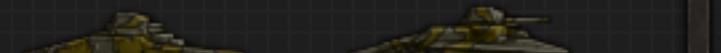


AMX 39

Light Chassis III



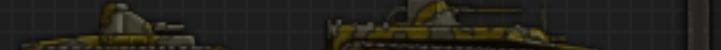
AMX 12t



AMX-13



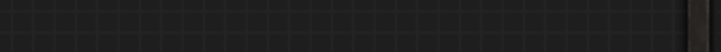
AMX-13 FL-11



AMX-US



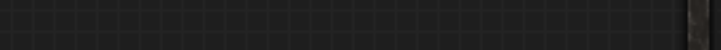
AMX-13-57



F3 155mm

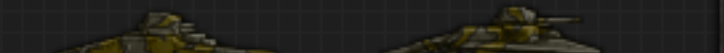


AMX-105A

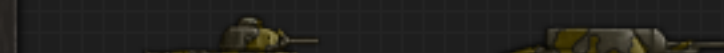


AMX DCA 40

Amphibious Chassis



DP 2



DP 3

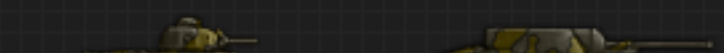


CA 11

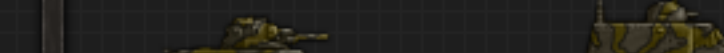


LVT-Bofors 40

Interwar Medium Chassis



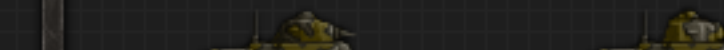
S 35



CDC 76.2mm S 35



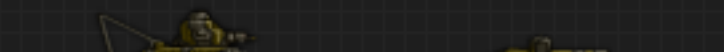
S 40



SAu 40 47mm



SAu 40 75mm



Char D1

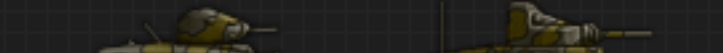


75 G-R

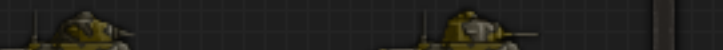
Medium Chassis I



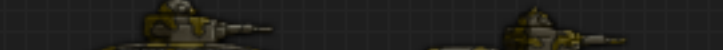
AMC 35



ACG 2

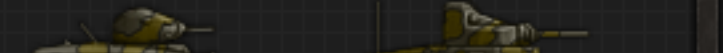


Char D2 M1935



Char D2 M1938

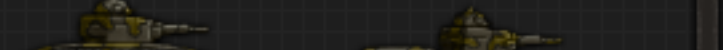
Medium Chassis II



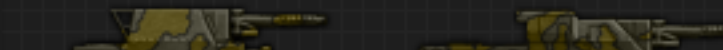
AMX 40



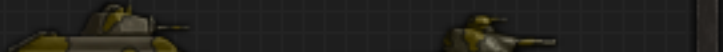
SARL 42



G 1 B



G 1 L



G 1 P



G 1 R

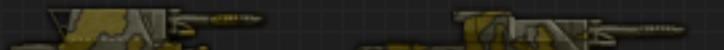
Medium Chassis III



Lorraine 40t



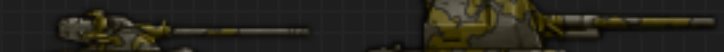
CA Lorraine 100



Lorraine 155 No. 1



Lorraine 155 No. 2

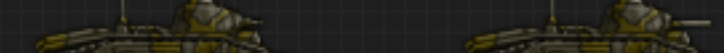


Bat.-Châtillon 25t



Bat.-Châtillon 155

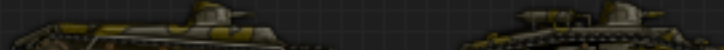
Interwar Heavy Chassis



Char B1 w/ SA34



Char B1 w/ SA35



Char SRA



Char SRB



FCM 2C



FCM 2C bis

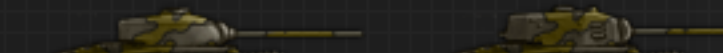


194mm GPF

Heavy Chassis I



Char B1 Bis



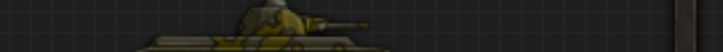
Char B1 Ter



Char B40 47mm



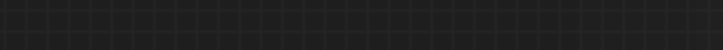
Char B40 75mm



AMX Tracteur B



ARL 37 Variant C



ARL 37 Variant S



ARL 37 Variant V

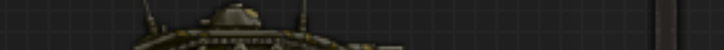
Heavy Chassis II



ARL-44 76mm



ARL-44 90mm



ARL V39

Heavy Chassis III



AMX M4 1945



AMX M4 1949



AMX CDC 90



FCM 50t



SOMUA-SM

Super Heavy Chassis



FCM F1



FCM F4



Char de Forteresse ARL

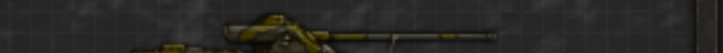


AMX Tracteur C 1939



AMX Tracteur C 1940

Modern Chassis



AMX-50-100



AMX-50-120



AMX-50 w/ TCB-120



AMX-65t



Foch